

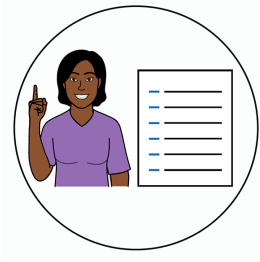
## Gender, health and disability

Women with Disabilities Victoria



Easy English

## Hard words



This book has some hard words.

The first time we write a hard word

- the word is in **blue**
- we write what the hard word means.

## You can get help with this book



You can get someone to help you

- read this book
- know what this book is about



- find more information.

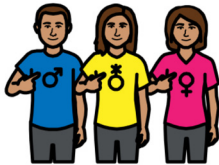
We will write our contact information at the end of this book.

## About this book



This book is from Women with Disabilities Victoria.

This book is about the roles **healthcare staff** have in understanding the links between



- gender



- health



- disability.



Healthcare staff includes

- doctors and nurses



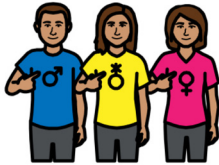
- allied health professionals
  - for example, physiotherapists and speech pathologists



- administration and reception workers.

## Healthcare barriers

Healthcare staff can help women with disabilities get good healthcare by understanding the links between



- gender



- health

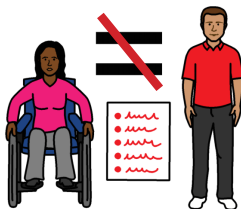


- disability.



Healthcare staff should know that

- women with disabilities are often left out of communities



- when women with disabilities are left out they are **not** equal.

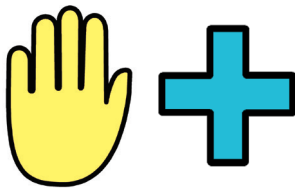


When women with disabilities are left out

- it can be stressful



- it can make you tired.



Some women with disabilities can have more barriers to healthcare than others.

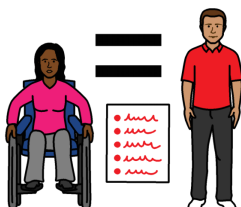


It is important that healthcare staff think about the different types of barriers that you might have.



Bad attitudes and barriers need to be taken away so women with disabilities can

- take part in whatever you want

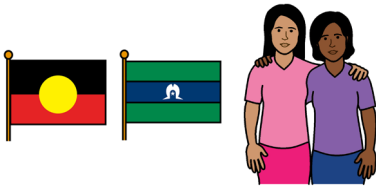


- have equal opportunities

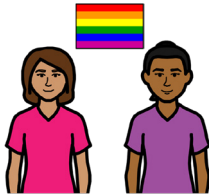


- be involved with your healthcare.

Because of how our healthcare systems work there are some things that can impact the health of women with disabilities, including



- Aboriginal or Torres Strait Islander identity



- LGBTIQ+ identity



- the country you or your family are from



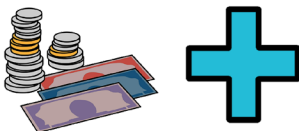
- how much money you have



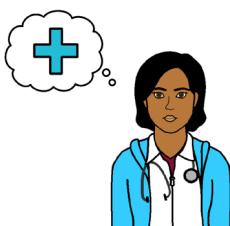
- where you live



- if you can use **Medicare**.



Medicare pays some or all of your healthcare costs if you are an Australian resident.



Healthcare staff should think about how they can best help you if any of these things impact you.

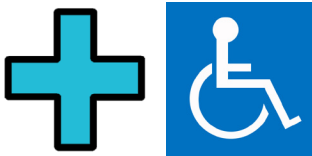
## What healthcare staff can do

To support women with disabilities, healthcare staff can



- ask you how they can take away barriers

- try to take away healthcare barriers



- make sure healthcare services are accessible



- make sure healthcare services are inclusive and safe for you



- use words that help you feel safe



- ask about your wellbeing as well as your physical health.



Healthcare staff should give women with disabilities support and information about areas outside of healthcare, including

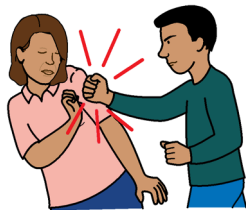
- disability support



- housing



- employment.

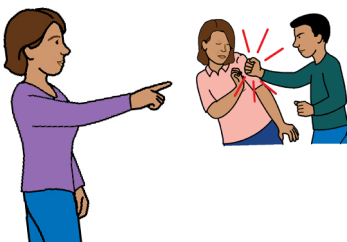


Healthcare staff should learn

- that women with disabilities are more likely to experience family violence



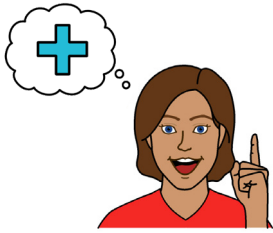
- how to talk to women with disabilities if they are told about something bad that has happened



- how to look out for support people who might control or abuse women with disabilities.



## Accessible information

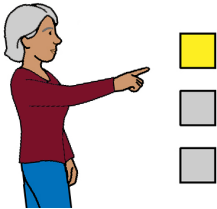


You have the **right** to

- know everything about your healthcare



- be told about your healthcare in ways that you understand



- have healthcare choices.



Rights are things everyone should

- get

- have

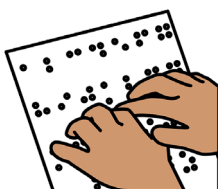
- do.

You also have the right to have information in **formats** that are accessible for you.



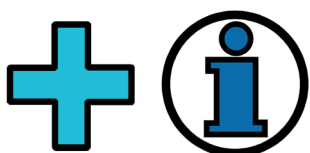
Accessible formats could include

- Easy English documents
- documents in languages other than English
- audio described videos
- braille.



Healthcare staff should

- ask about what formats work best for you
- give you information in ways that work for you



- support you to learn more healthcare information.

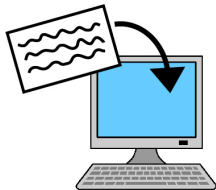
## More information



For more information contact  
Women with Disabilities Victoria.



Website [www.wdv.org.au](http://www.wdv.org.au)



Email [wdv@wdv.org.au](mailto:wdv@wdv.org.au)



Scan this QR code

You can learn more at: [www.wdv.org.au](http://www.wdv.org.au)

The development of this resource was supported by the Australian Government Department of Social Services. Go to [www.dss.gov.au](http://www.dss.gov.au) for more information.

The Australian Government Department of Social Services funding is gratefully acknowledged.

Women with Disabilities Victoria would also like to acknowledge the ongoing support from our partner organisations – Multicultural Centre for Women's Health, Women's Health Loddon Mallee and Women's Health in the North as well as members of the Project Advisory Group.

Our particular thanks to Women with Disabilities Victoria's twelve Health Experts, who contributed their expertise to this resource as part of our co-design process.

This resource was prepared by Women with Disabilities Victoria.

Published by Women with Disabilities Victoria: Level 9/255 Bourke Street, Melbourne, Victoria 3000

© Women with Disabilities Victoria 2022

This Easy English document was created by Scope (Aust) Ltd. in March, 2022 using Picture Communication Symbols (PCS). PCS is a trademark of Tobii Dynavox, LLC. All rights reserved. Used with permission. This document must not be sold to third parties. The images must not be reused without permission. For more information about the images, contact Scope on 1300 472 673 or visit [scopeaust.org.au](http://scopeaust.org.au)