

# What is inclusive co-design in practice?

# 1

## Creating safe and accessible co-design spaces



*Women*withdisabilitiesvictoria  
empowering women

See the full poster here: [www.wdv.org.au](http://www.wdv.org.au)

What is inclusive co-design in practice?

## 2 Empowering each other in co-design teams



*W*omenwithdisabilitiesvictoria  
empowering women

See the full poster here: [www.wdv.org.au](http://www.wdv.org.au)

# What is inclusive co-design in practice?

## 3 Supporting participation through valuing diversity



# What is inclusive co-design in practice?

## 4 **Developing relationships based on authenticity, empathy and trust**



# What is inclusive co-design in practice?

## 5 Building capacity through continuous learning



What is inclusive co-design in practice?

# 6 Improving through continuous feedback

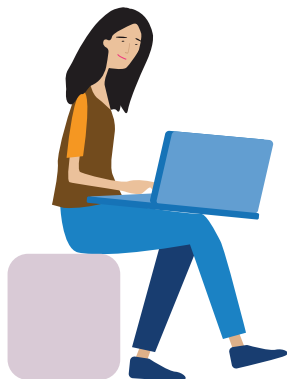


*W*omenwithdisabilitiesvictoria  
empowering women

See the full poster here: [www.wdv.org.au](http://www.wdv.org.au)

What is inclusive co-design in practice?

# 7 Ongoing monitoring and evaluation



*W*omenwithdisabilitiesvictoria  
empowering women

See the full poster here: [www.wdv.org.au](http://www.wdv.org.au)



# Inclusive co-design in practice

**Seven ways Women with Disabilities Victoria supports accessible and inclusive co-design of resources, services and programs**



More information at:  
[www.wdv.org.au](http://www.wdv.org.au)

- 1**  
**Creating safe and accessible co-design spaces**
- 2**  
**Empowering each other in co-design teams**
- 3**  
**Supporting participation through valuing diversity**
- 4**  
**Developing relationships based on authenticity, empathy and trust**
- 5**  
**Building capacity through continuous learning**
- 6**  
**Improving through continuous feedback**
- 7**  
**Ongoing monitoring and evaluation**

The development of this resource was supported by the Australian Government Department of Social Services. Go to [www.dss.gov.au](http://www.dss.gov.au) for more information. The Australian Government Department of Social Services funding is gratefully acknowledged.

Women with Disabilities Victoria would also like to acknowledge the ongoing support from our partner organisations – Multicultural Centre for Women's Health, Women's Health Loddon Mallee and Women's Health in the North as well as members of the Project Advisory Group. Our particular thanks to Women with Disabilities Victoria's twelve Health Experts, who contributed their expertise to this resource as part of our co-design process.

This resource was prepared by Women with Disabilities Victoria. Published by Women with Disabilities Victoria: PO Box 18314, Collins Street East. VIC 8003 ©Women with Disabilities Victoria 2022

